

1. Description

This support's manual contains information about how to download NEO's log with the program NEOc.

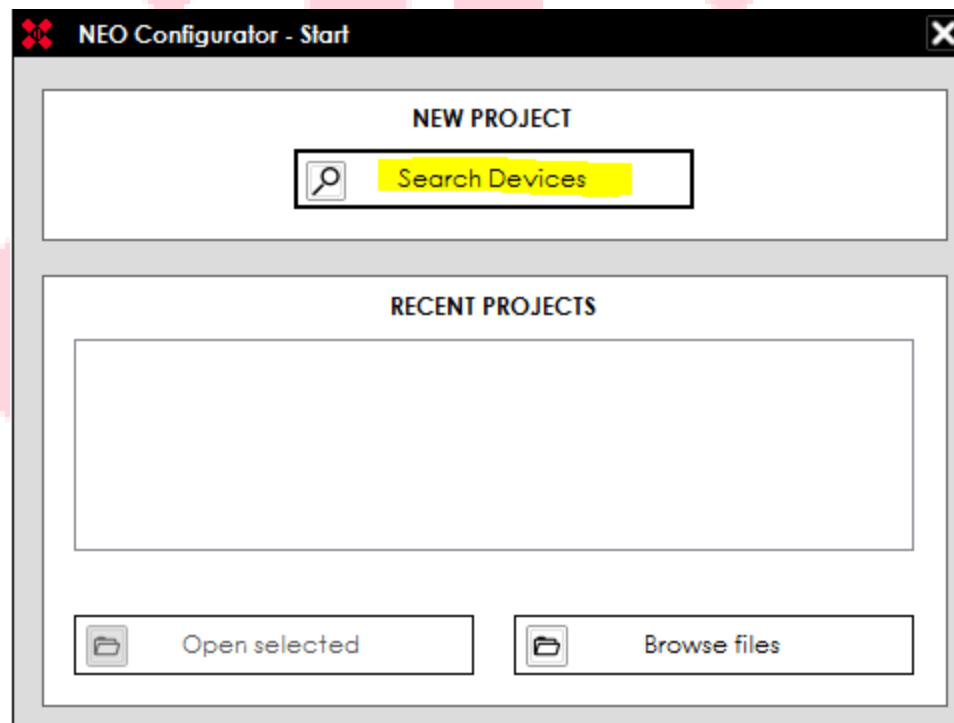
2. Downloads error logs with appmaster privileges from NEOConfigurator

First, enter to NEOc using:

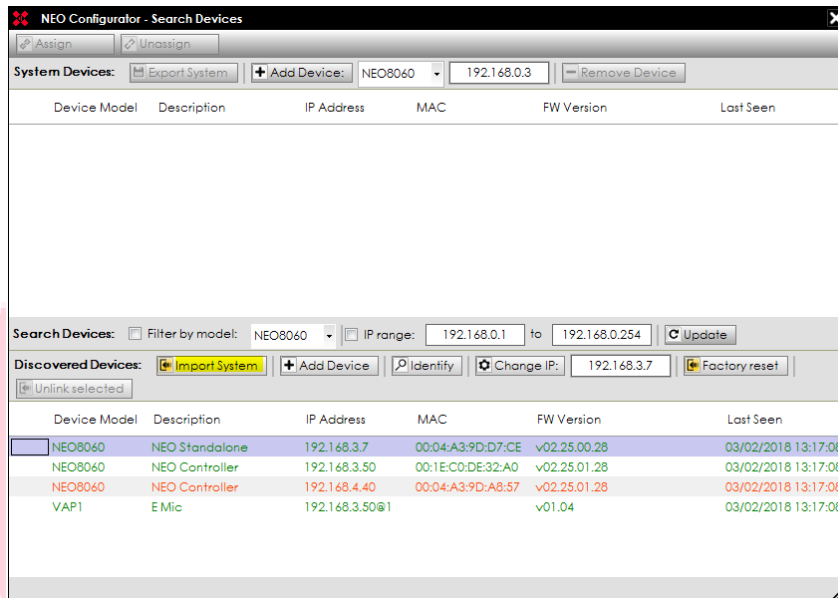
USER: default

Password: 1234

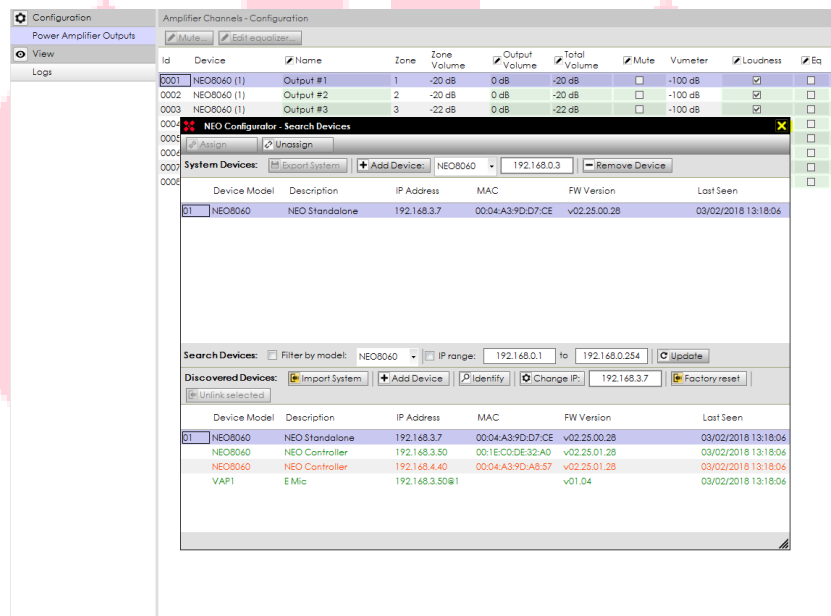
Then, click "Search Devices".



Select the device whose log you want to see and click “Import System”.



Close the window.

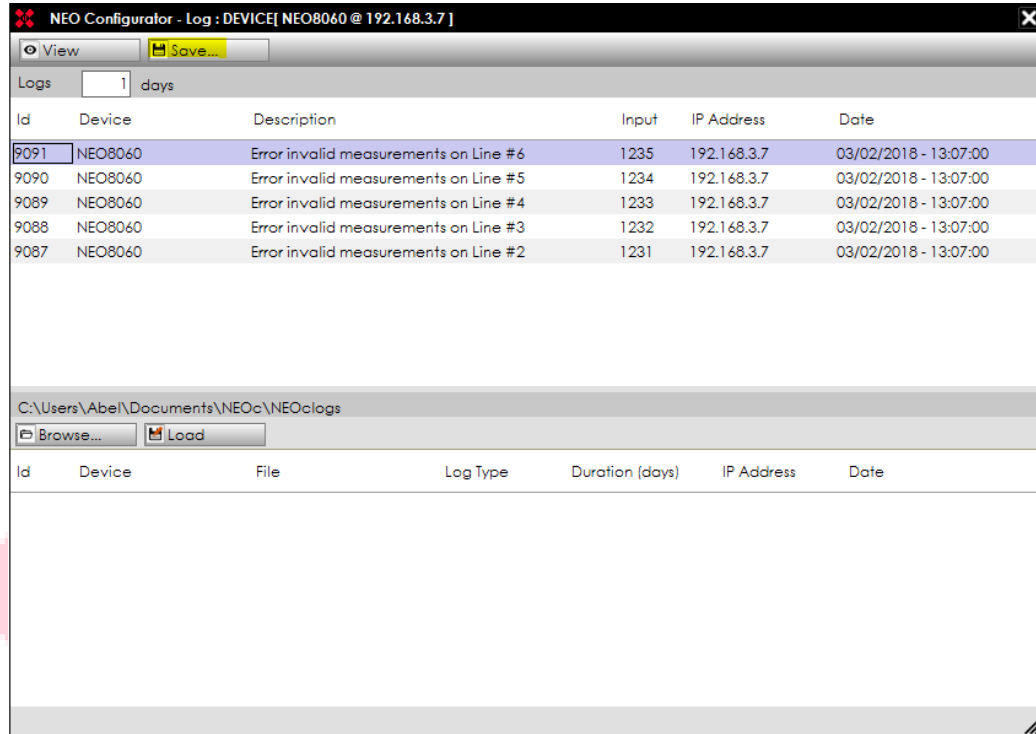


In the main window, select the device whose log you want to see and click “Logs”.

Configuration		Amplifier Channels - Configuration									
Power Amplifier Outputs		Mute...		Edit equalizer...							
View		Id	Device	Name	Zone	Zone Volume	Output Volume	Total Volume	Mute	Vumeter	Loudness
Logs		0001	NEO8060 (1)	Output #1	1	-20 dB	0 dB	-20 dB	<input type="checkbox"/>	-100 dB	<input checked="" type="checkbox"/>
		0002	NEO8060 (1)	Output #2	2	-20 dB	0 dB	-20 dB	<input type="checkbox"/>	-100 dB	<input checked="" type="checkbox"/>
		0003	NEO8060 (1)	Output #3	3	-22 dB	0 dB	-22 dB	<input type="checkbox"/>	-100 dB	<input checked="" type="checkbox"/>
		0004	NEO8060 (1)	Output #4	4	-22 dB	0 dB	-22 dB	<input type="checkbox"/>	-100 dB	<input checked="" type="checkbox"/>
		0005	NEO8060 (1)	Output #5	5	-20 dB	0 dB	-20 dB	<input checked="" type="checkbox"/>	-100 dB	<input checked="" type="checkbox"/>
		0006	NEO8060 (1)	Output #6	6	-22 dB	0 dB	-22 dB	<input type="checkbox"/>	-100 dB	<input checked="" type="checkbox"/>
		0007	NEO8060 (1)	Output #7			0 dB	0 dB	<input type="checkbox"/>	-100 dB	<input checked="" type="checkbox"/>
		0008	NEO8060 (1)	Output #8			0 dB	0 dB	<input type="checkbox"/>	-100 dB	<input checked="" type="checkbox"/>

Select the type of log you want to see.

Configuration		Logs					
Power Amplifier Outputs		Id	Device	Description	Log Type	Duration	
Logs		0001	NEO8060	Emergency log file	Emergency	1	<input type="button" value="View"/>
		0002	NEO8060	Fault log file	Fault	1	<input type="button" value="View"/>
		0003	NEO8060	Disarmed log file	Disarmed	1	<input type="button" value="View"/>
		0004	NEO8060	Device log file	Device	1	<input type="button" value="View"/>



The selected log is downloaded.

Please contact with LDA Support Department for any information