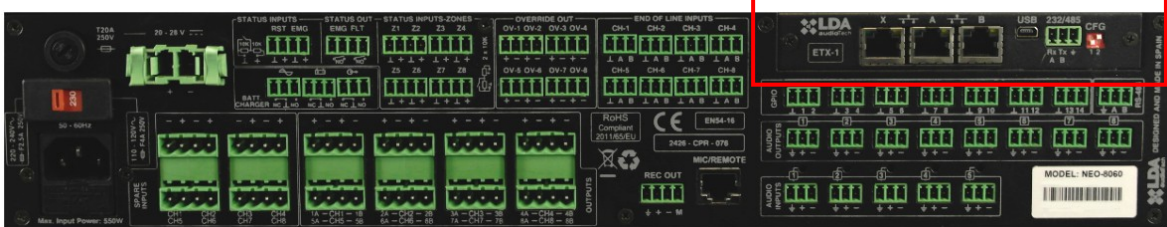


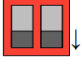


A. Connecting your computer with NEO devices.

The ETX-1 is the network card in NEO devices used to manage the control and audio data:



This is one switch with three ports (X, A, and B) which three different MAC address, but with only one IP address.

The port in NEO can be configure to transmit the audio or control or audio and control (FlexNet mode) as per following picture:

Marca	Descripción	Activación
CFG	Puerto A Datos de control Puerto B Datos de audio Puerto X Flexnet**	Posición 00 ↓  ↓
CFG	Puerto A Flexnet** Puerto B* Flexnet** Puerto X Datos de control	Posición 01 ↓  ↑
CFG	Puerto A Flexnet** Puerto B* Flexnet** Puerto X Datos de audio	Posición 10 ↑  ↓
CFG	Puerto A Flexnet** Puerto B* Flexnet** Puerto X Flexnet**	Posición 11 ↑  ↑

* NOTE 1: in case of the NEO-8060, port B usually be on standby in 01, 10 and 11 mode to avoid the storm in the FlexNet ring. This socket only will be open when there a problem in the with another devices in the network.

** NOTE 2: Flexnet mode is: VLAN id 1 for control data + VLAN id 2 for audio data. The id number of the VLAN will be 1 and 2 as default, but is possible to configure by software.

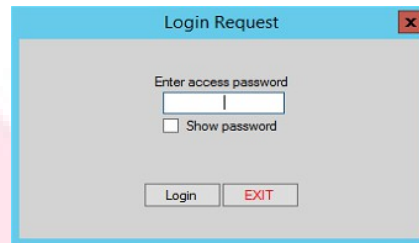
(1) NOTE: Connect the server to X port with your computer usign a UTP cable CAT-6. In NEO device, DIP switch must be on down-up position (X port with Control Data).

(2) NOTE: Set the computer network card in the same IP range than NEO device (refer to “LDA Support Handbook - LDA Discover Tool v1.0” to check network features of NEO).

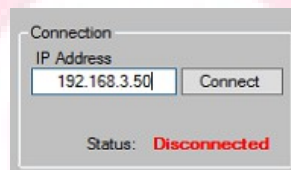
(3) NOTE: Enable only one network card in your computer to broadcast one device only.

B. Starting NEO app.

1. Set the correct password at initial windows (please contact to support@lda-audiotech.com)



2. Write the IP address of your NEO device in the "IP Address" box:



3. Press "Connect" button and wait when Status indicates "Ready".

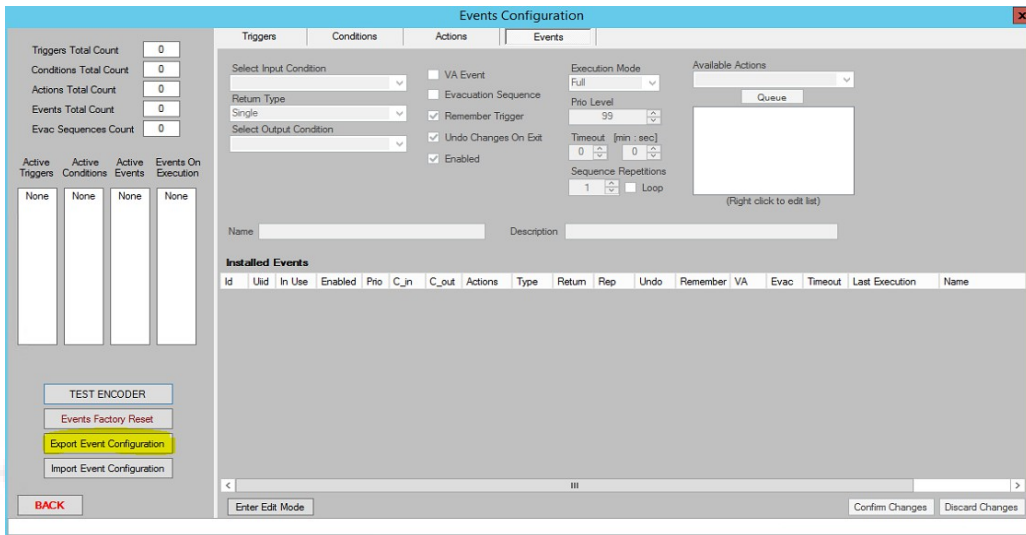
C. Export and import event configuration.

We want to get the .bin file to save the actual event configuration of our system. This file will save all information about events in NEO devices. You can recover in any moment.

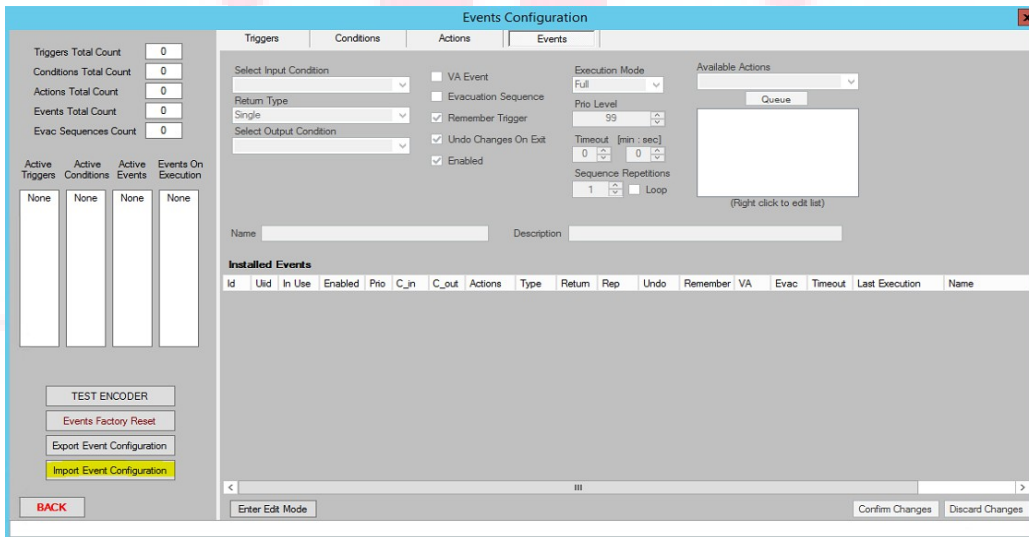
1. Press "Events" button to open the Event Management menu:



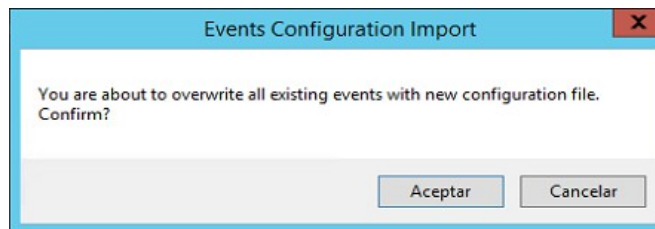
- Once “Events” menu is opened, go to “Export Event Configuration” button to do a backup. It will save a .bin file in your computer.



- Once you have save the actual event configuration, press “Import Event Configuration” to recover the new configuration.



- Press Accept in the pop-up windows and you will save the new event configuration.





Please contact with LDA Support Department for any information

support@lda-audiotech.com