

Description

This support's manual contains information about how to format ETX SD card and to update NEO's firmware ETX.

Backup in NEOc.

Please refer to new support handbook "SAVE AND LOAD BACKUP" <http://support.lda-audiotech.com/en/handbooks>

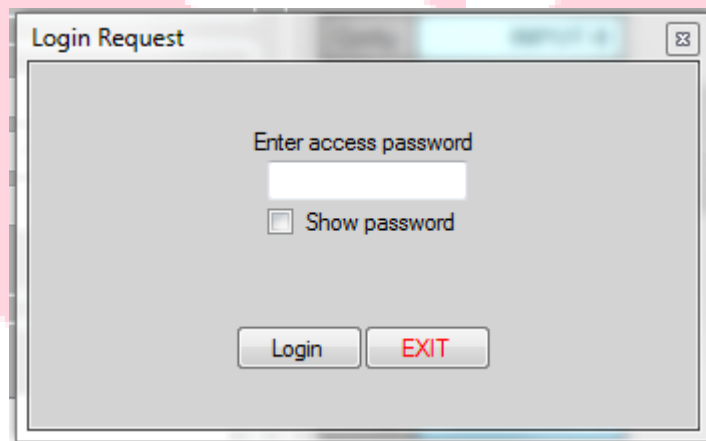
Download Firmware.

Download the firmware *etx.bin* from <http://support.lda-audiotech.com/en/software> (Firmware NEO-8060). You have three files compressed in .zip (*bundle*, *etx.bin* and *front.bin*). In this case you must use *etx.bin*

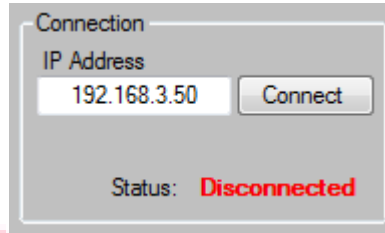
Option 1:

2. Format SD card of ETX with NEO App.

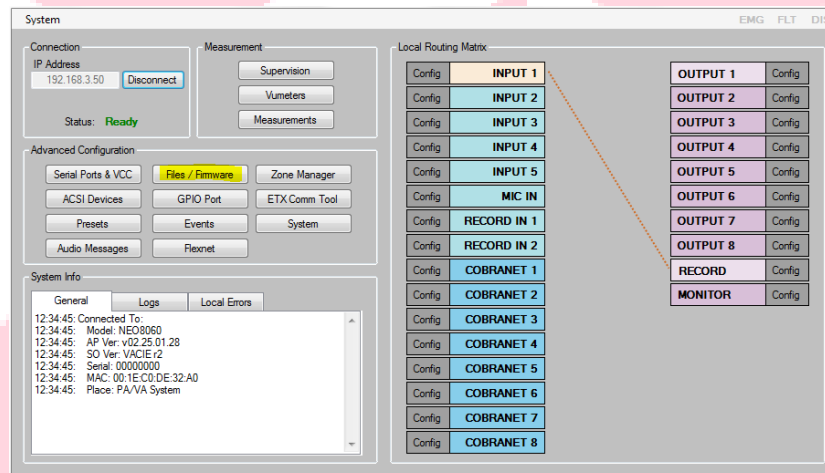
Set the correct password in the initial window (please contact to support@lda-audiotech.com)



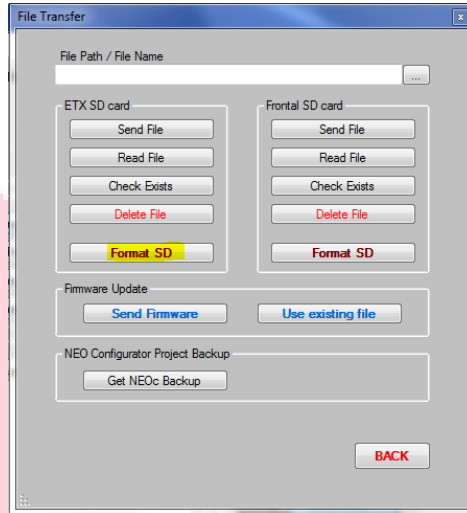
Next, put the IP Address of your NEO and click the button connect. For example, IP Address 192.168.3.50



Once it is connected (status: Ready), click the button “File/Firmware”.

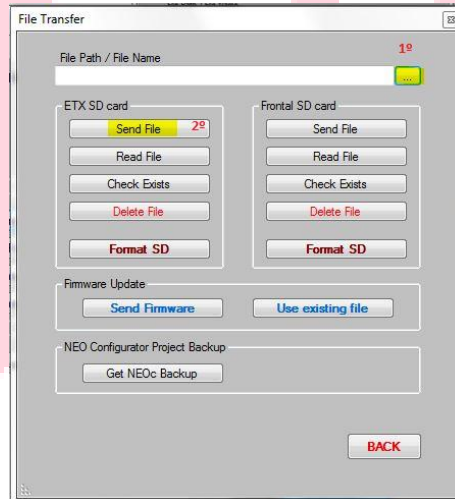


In the window “File Transfer”, click the button “Format SD” in the column ETX SD card. The NEO will format the ETX SD card.



LOAD Firmware etx.bin

Once formatted the SD card, click the search button in “File path/ File name”, select the firmware *etx.bin* and click “Send File”.



If you can't send the file using NEO App, you must do it manually.

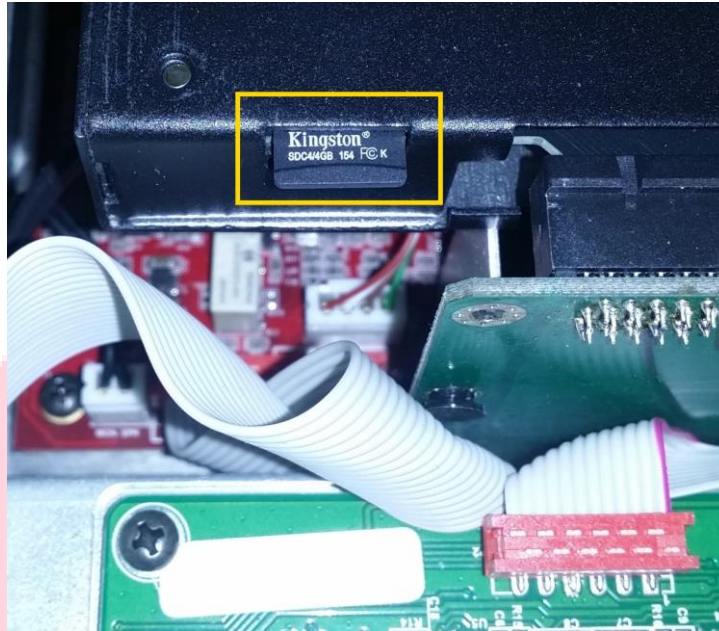
Option 2:

3. Format ETX SD card manually.

Extract the ETX module in NEO's back removing the screws shown in the photo.



Locate the SD card and eject it.



Eject the defective SD card and change it for another one. The SD card must be 4GB and formatted FAT32 in the PC. You have to Copy the firmware of support web (etx.bin) in the SD card. Then, proceed in reverse order for assembly. Download handbook for load Backup form NEOc.

4. Load Backup.

Please refer to new support handbook "SAVE AND LOAD BACKUP" <http://support.lda-audiotech.com/en/handbooks>

Please contact with LDA Support Department for any information

support@lda-audiotech.com