

# Save and load a project backup

NEO series equipments with NEOc software



## **1. Description**

This support manual contains information about how to download or load a backup project with NEOc software.

## **2. Objective**

The aim of this document is to define a guide for download and load a project for the NEO series equipments.

Once the installation is finished, it's strongly recommended to do a backup copy of the project.

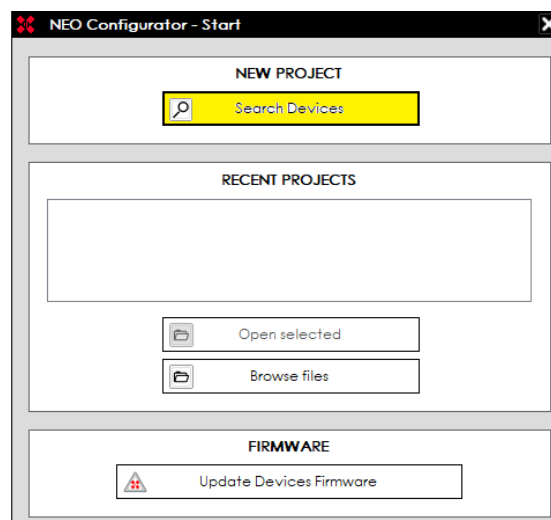
The next chapters detail the steps to be followed.

### 3. Get online with the equipment through NEOc

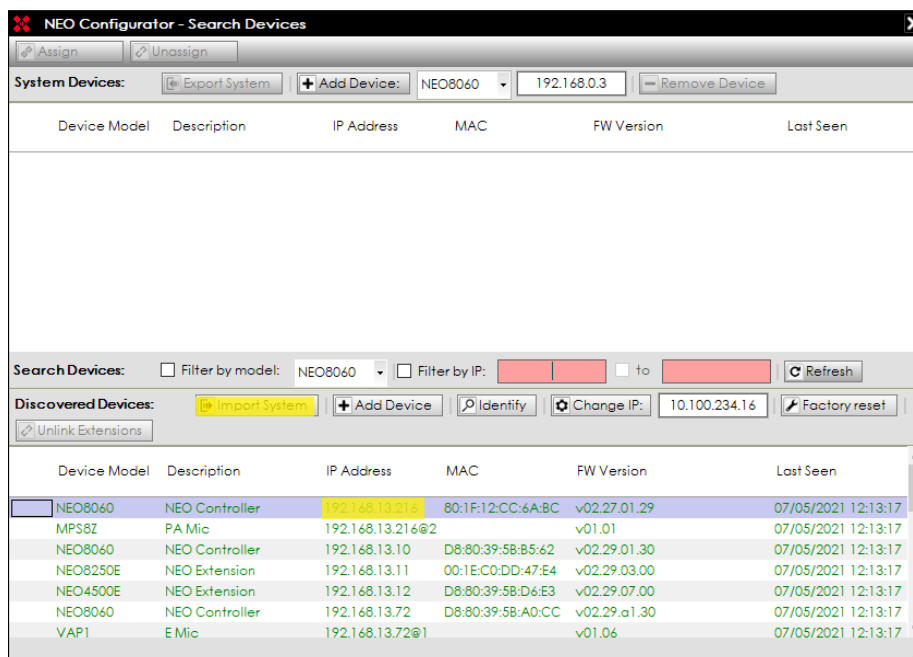
It's required to login NEOc configuration software using the following credentials:

- User: default
- Password: 1234

Once the software is opened, the equipment to be connected to must be searched.

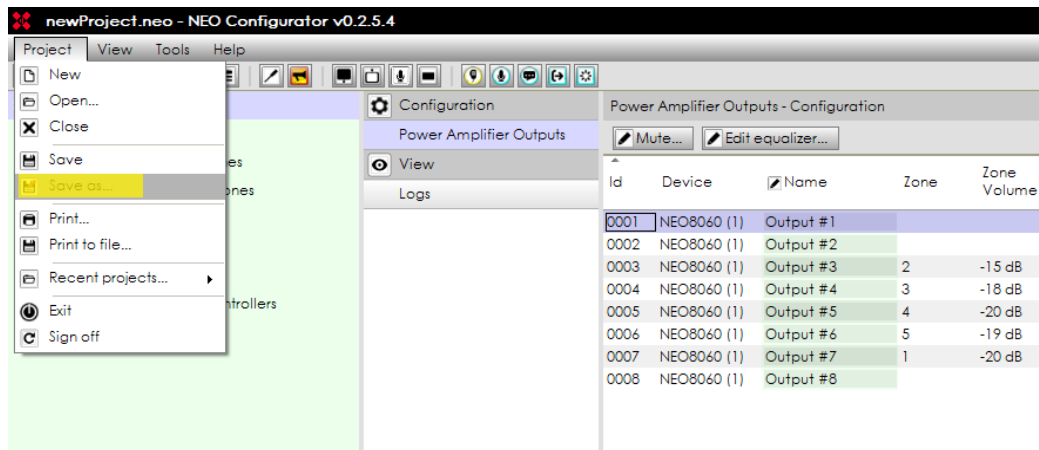


After the equipment is found on the network, it is necessary to get connected to it. Select the equipment you are going to work with and click the button "Import System".



## 4. Do a project backup

Click on “Project” tab in the upper bar menu and then select “Save as...” to do a backup.

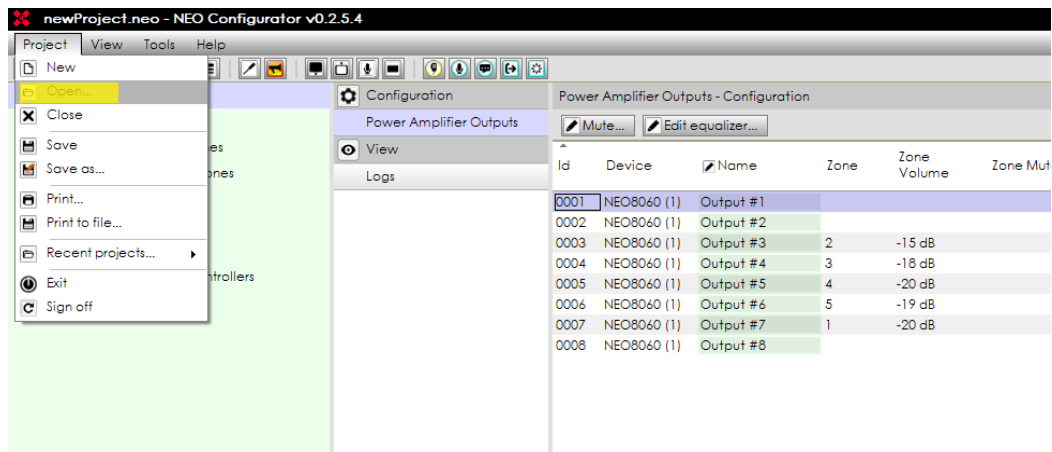


The default path where the documents will be saved is:

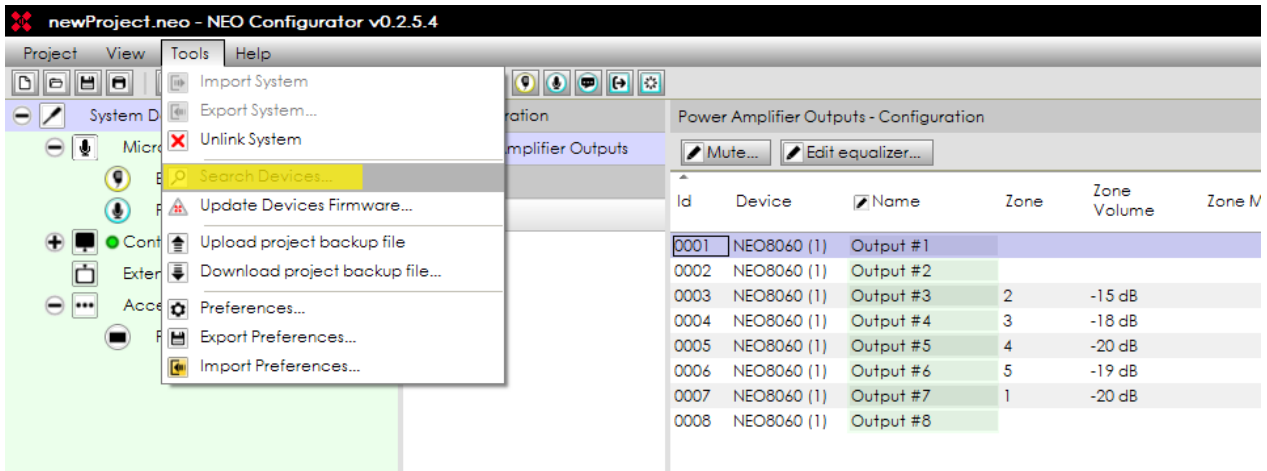
- C:\...\Documents\NEO\NEOProjects

## 5. Load a project backup

In the upper bar menu click on “Project”. Then, click on “Open” and select the backup project previously saved.

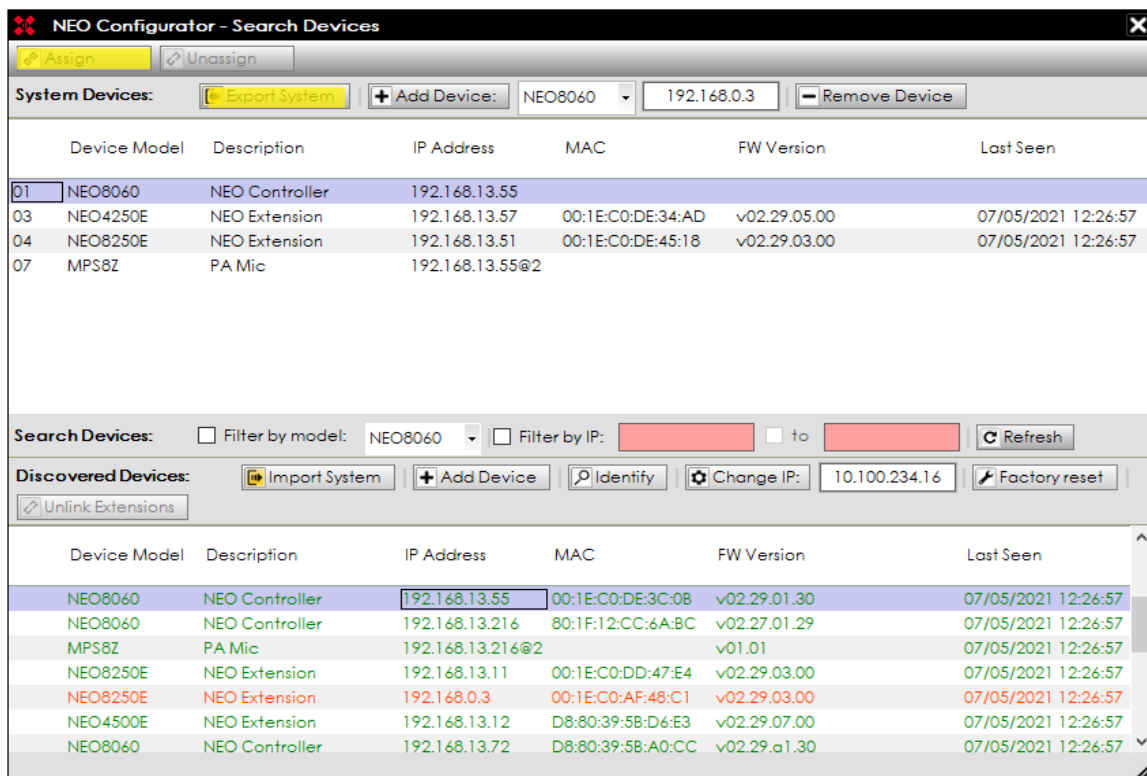


Click on “Tools” and then “Search devices”.



Inside the “Search devices” window, you must do the binding with the equipments that are inside the backup configuration (upper window) with the equipments discovered in your network (lower window). To do this, click on the button “Assign” with both equipments selected. This sequence must be repeated for each system equipment.

Then click on “Export system”. The backup will be loaded on the previously selected NEO.



For further information, please see our support website <https://support.lda-audiotech.com/>