

Support Handbook

LDA Discover Tool v1.0

Reference: **NEO series**



1 LDA DISCOVER TOOL

LDA Discover Tool is a software to locate NEO or ZES-22 equipment (firmware v1.0.4 and later versions) in the local network, without configure the IP range of our PC.

1. The software is available in the [Software & Firmware](#) section of the LDA support website.
2. Download "LDA Discover Tool" (zip file).
3. Once downloaded, extract the contents of the folder and click on the tool. All files must be installed in the same root folder, not just the executable.

To change the IP address of a device and connect the PC with the system items, as shown in *Illustration 1*:

1. Open the application and wait a few seconds while the list completes.
2. Select the item (1st).
3. To check which device you are selecting, use the "Identify" button to activate the LEDs of the device and detect exactly the unit (2nd).
4. Set a new IP address in the text box and press the "Change IP" button. (3rd)

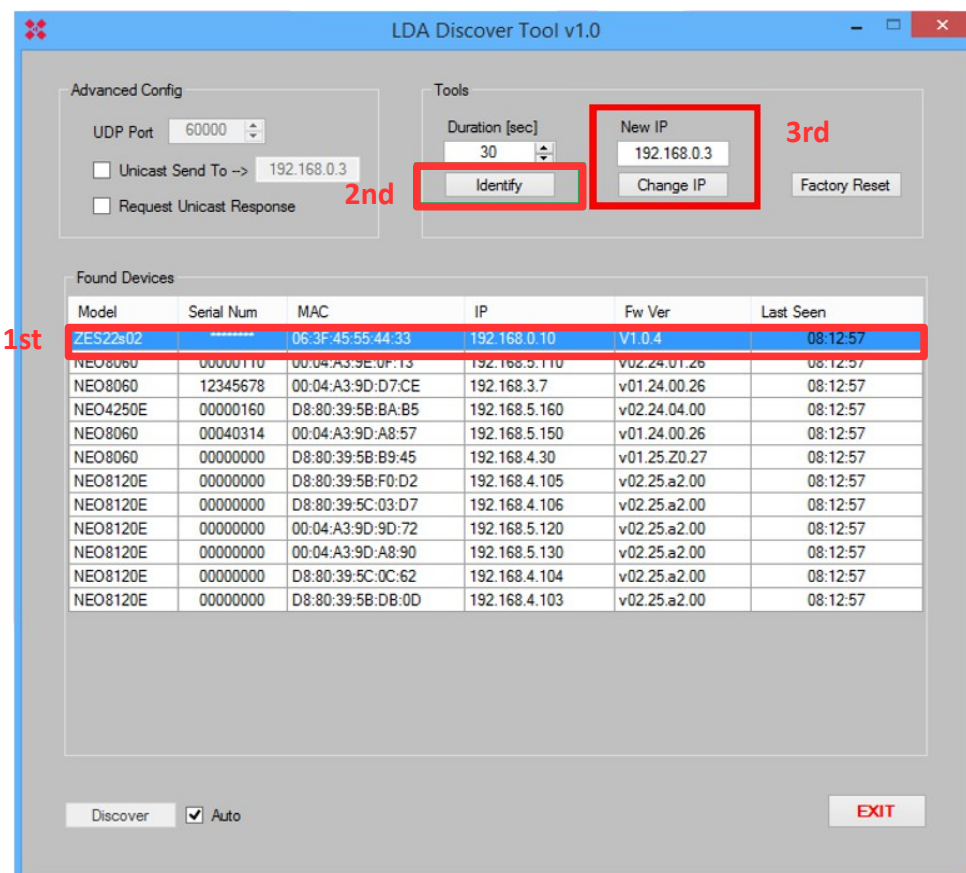


Image 1: Discover Tool software interface

For more information, please, contact with our Support Department at:

support@lda-audiotech.com